

Fast Track[®]

DOWNLOAD SOFTWARE

**For Fast Track 2+2[®] 1000 Series
Drive-Thru Timers
Version 1.00/3.01 - Direct Download
Rev. 10/00**

**Phase Research
3500 W. Moore Ave
Suite M
Santa Ana, CA 92704
Phone: 714-850-1320 Fax: 714-850-1502**

Fast Track[®] Download Software

License and Warranty

The software which accompanies this license (the "Software") is the property of Phase Research or its licensors and is protected by copyright law. While Phase Research continues to own the Software, you will have certain rights to the use of this Software after your acceptance of the license.

You May:

- (i) use one copy of the Software on a single computer.
- (ii) make one copy of the Software for archival purposes, or copy the software onto the hard disk of your computer and retain the original for archival purposes.
- (iii) install and use the Software for multiple computers and/or locations, **provided that a Separate Software License has been purchased** for each computer and/or location.

•You May Not:

- (i) sublicense, rent or lease any portion of the Software.
- (ii) reverse engineer, decompile, disassemble, modify, translate, make any attempt to discover the source code of the Software, or create derivative works from the Software.

Phase Research

3500 W. Moore Ave

Suite M

Santa Ana, CA, 92704

Phone: 714-850-1320 Fax: 714-850-1502

Copyright© 1998 - All Rights Reserved

•Limited Warranty, Disclaimer and Limit of Liability

Phase Research warrants that the documentation and the original Software disk is free from physical defects in material and workmanship under normal use. If at any time the Software fails to operate as described in the documentation, simply return the original disk to Phase Research and Phase Research will replace the Software at no charge or refund your purchase price, at Phase Research's option. Phase Research and its licensors do not warrant your data, that the Software will meet your requirements, or that the operation will be uninterrupted or error free.

THE WARRANTY ABOVE IS IN LIEU OF ALL OTHERS, EITHER EXPRESS OR IMPLIED, INCLUDING, BUT NOT LIMITED TO, THE IMPLIED WARRANTIES OF MERCHANTABILITY AND FITNESS FOR A PARTICULAR PURPOSE. SOME STATES HAVE LAWS THAT MAY RESTRICT OR PROHIBIT THE LIMITATIONS SET FORTH ABOVE AND YOUR RIGHTS UNDER LAW MAY VARY ACCORDING TO THE LAWS OF YOUR STATE.

Phase Research and its licensors shall not be liable for any incidental or consequential damages, including loss of data, lost profits or other special or indirect damages. Your rights under law may vary.

Copyrights and Credits:

Fast Track Download Software© 1998 -Phase Research. All rights reserved. Fast Track and Fast Track 2+2 are registered trademarks of Phase Research. Microsoft and Windows are registered trademarks of Microsoft Corp., registered in the U.S. and other countries.

Table of Contents

Introduction	Page 1
Connecting the Fast Track 2+2 to a Personal Computer	Page 2
Installing Fast Track Direct Download Software - DOS	Page 3
Running the Fast Track 2+2 Direct Download Software - DOS	Page 4
Running the Direct Download Software - DOS, cont'd	Page 5
Viewing and Printing Fast Track Download Reports from DOS	Page 6
Viewing and Printing Download Reports from DOS, cont'd	Page 7
Viewing and Printing Download Reports from DOS, cont'd	Page 8
Viewing and Printing Download Reports from DOS, cont'd	Page 9
Viewing and Editing the Config File for DOS	Page 10
Installing Fast Track Direct Download Software - Windows 3.1	Page 11
Installing Direct Download Software - Windows 3.1, cont'd	Page 12
Installing Fast Track Direct Download Software - Windows 95	Page 13
Installing Direct Download Software - Windows 95, cont'd	Page 14
Running the Fast Track Direct Download Program - Windows 3.1/95	Page 15
Running the Direct Download Program - Windows 3.1/95, cont'd	Page 16
Setting the Scheduler for Automatic Direct Downloading	Page 16
Setting the Scheduler for Automatic Direct Downloading, cont'd	Page 17
Viewing and Printing Fast Track Download Reports - Windows 3.1/95	Page 17
Viewing and Printing Download Reports - Windows 3.1/95, cont'd	Page 18
Viewing and Editing the Config File - Windows 3.1/95	Page 19
Fast Track Download Report Types	Page 20
Fast Track Download Report Types, cont'd	Page 21
Fast Track Report Heading Description and Programming Directions	Page 21

Introduction

The **Fast Track 2+2 Drive-Thru Timer** provides three methods of drive-thru time data output:

- 1)The **Super-bright LED Remote Display(s)** which show(s) real time drive-thru activity such as Service Window or Total time;
- 2)The **Main Console Printer** which prints automatic reports as programmed and/or manual reports upon demand;
- 3)The **Main Console LCD** which displays current drive-thru activity, total car count, station averages and Target Station grading.

Fast Track Download Software is a fourth method of data output and an excellent tool for Management and Owners to easily access drive-thru time data. By connecting an in-store PC or Laptop computer to the already existing RS232 port on the Fast Track 2+2 Drive-Thru Timer, the **Download Software** allows retrieval of three ASCII format reports. These three reports can be viewed, printed, stored and/or imported to many popular database and/or spreadsheet programs. Downloading can be scheduled to occur at the same time each day by using the **Fast Track Scheduler Module** included with the **Download Software**, or executed manually by the user at any time.

Report Types:

ET Report -This report is Event data for every car from the current day. Each car's Greet, Menu, Win1 (cashier's window-if applicable), Win2 (pickup window) & Line times are logged, along with the current time/day/date, Cum and Shift periods. Cum and Shift period change-over times are also displayed.

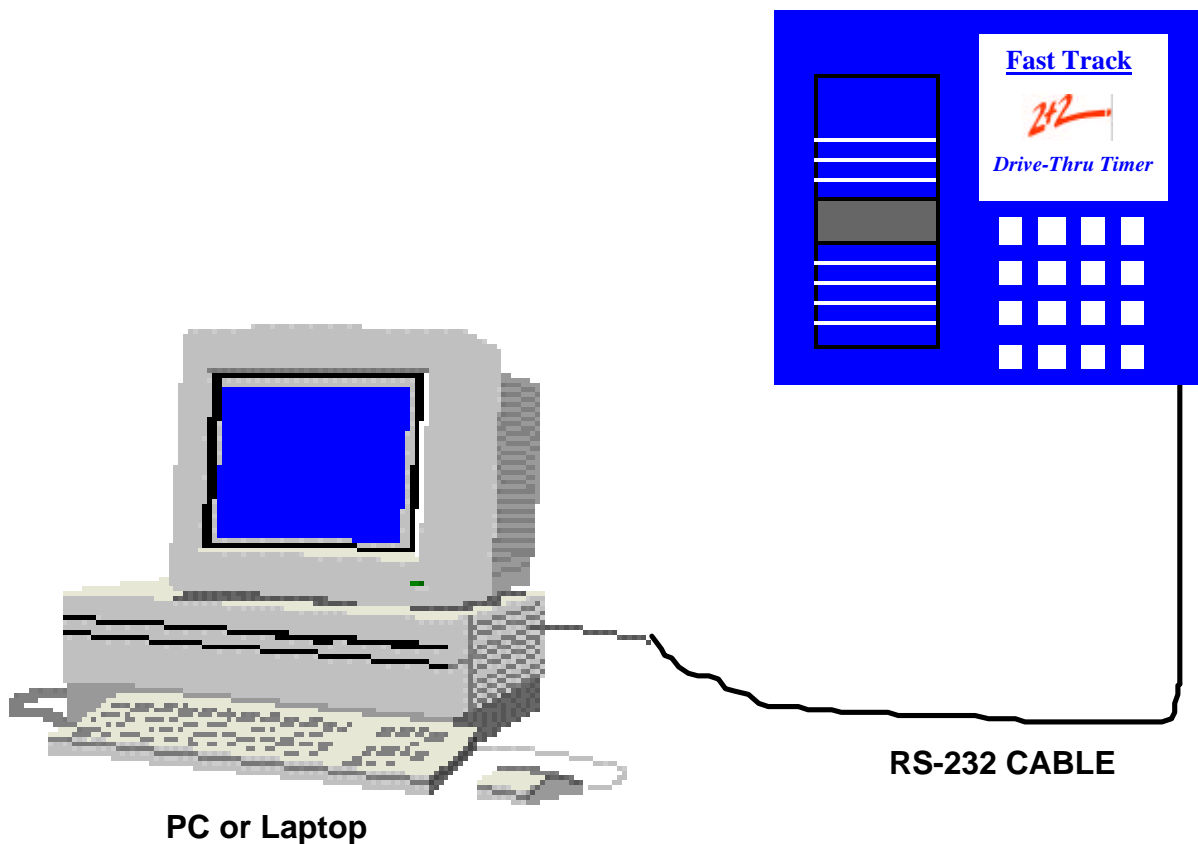
RT Report - This report is Daypart (Cum) & Shift period information from the current day. Each Daypart & Shift period is shown along with the time frame of that period (i.e., Cum 1: 6:00AM - 10:30AM, Shf 1: 6:00AM - 3:30PM), total cars and average times for each station (I.e. Greet time, Service Window, Total Time). Daily totals and averages are shown on this report as well.

AT Report - This report is Archive data for the current day, along with total car counts, averages, total times and Target station grading going as far back as 2 months. This information allows a quick glance at drive-thru history to help pinpoint trends or problems and allows adjustment and/or training of staffing to improve restaurant efficiency.

Connecting the Fast Track 2+2 to a Personal Computer

Each Fast Track 2+2 Drive-Thru Timer Main Console is equipped with an RS-232 Port Female DB9 connector which is located on the bottom right hand side of the unit.

Using a standard Female to Male 9 pin DB9 RS-232 cable, connect the female end to the port on the Fast Track 2+2 Main console. Connect the male end of the cable to an open port on your computer. **This cable can be purchased through your dealer or at most computer stores.**



Installing Fast Track Direct Download Software - DOS

Installing software using DOS:

Note: The directions for loading the Fast Track Direct Downloading Software for DOS are on the diskette label. These installation instructions are also listed below for your convenience.

Go to the DOS root directory C:\> and type **A:**

Press **Enter**.

This will take you to the A: drive prompt.

At the A:Drive prompt A:\>, type **CD DOSVER**

Press **Enter**.

This will take you to the A:\DOSVER> directory.

```
C:\>A:
```

```
A:\>
```

```
A:\>CD DOSVER
```

```
A:\DOSVER>
```

At this prompt A:\DOSVER>, type **FTSETUP**

Press **Enter**.

```
A:\>CD DOSVER
```

```
A:\DOSVER>FTSETUP
```

The software will now create a directory labeled **FT2P2** in the C:Drive and install the software.

Verify that all the files have loaded by typing

DIR C: and pressing **Enter**.

```
A:\DOSVER>FTSETUP
A:\DOSVER\Ftreprt6.cfg
          1 file(s) copied
A:\DOSVER\Ftreprt6.EXE
          1 file(s) copied
          1 file(s) copied
A:\DOSVER>
```

You should then see these files displayed. Installation is now complete.

```
A:\DOSVER>DIR C:

Volume in drive C has no label
Volume Serial Number is 302C-16E8
Directory of C:\FT2P2

.                <DIR>          01-29-98  3:36p  .
..               <DIR>          01-29-98  3:36p  ..
FTREPRT6 CFG      92  01-28-98  2:36p  Ftreprt6.cfg
FTREPRT6 EXE    66,828  01-15-98 10:02a  Ftreprt6.EXE
README  TXT      3,664  01-26-98  9:03a  README.TXT
          3 file(s)              70,584 bytes
          2 dir(s)  1,334,837,248 bytes free
```

Running Fast Track Download Program - DOS

Running the Download Program from DOS:

Go to the C:> root prompt and type **CD FT2P2**

You should now be at the **FT2P2**.

directory C:\FT2P2>.

At this prompt C:\FT2P2> type

FTREPT6

Note: The software will automatically choose Port 1 as the downloading port.

Refer to “Editing the Configuration File” on how to change the port setting.

Press “**ENTER**”

The download program is now initiated and you will see your computer display the three following screens.

```
C:\>CD FT2P2  
  
C:\FT2P2>FTREPT6
```

```
PHASE RESEARCH  
FAST TRACK 2+2 DOWNLOAD PROGRAM  
for Event Data Logging Version  
Version 1.01, January 14, 1998  
COPYRIGHT 1992-1998 by Howard Corlett  
ALL RIGHTS RESERVED
```

This screen indicates that the download program has initiated

Running the Download Program - DOS cont'd:

```
PHASE RESEARCH
FAST TRACK 2+2 DOWNLOAD PROGRAM
for Event Data Logging Version
Version 5.09, December 12, 1997
COPYRIGHT 1992-1997 by Howard Corlett
ALL RIGHTS RESERVED
```

The next screen indicates the port number that the program is set to download through

```
Attempting log on 2
Reading EPROM version number
FT249FMC 8/96
Reading Time and Date from FT 2+2
Reading Configuration Data from FT 2+2
Loading Store Data from FT 2+2
FT 2+2 Event Logger Not Full
Loading yesterday's Event Data from FT 2+2
Printing 'Event Log Read' on FT 2+2
First day of week is TUE
Single Lane Ft 2+2
Loading A Side Archive Data from FT 2+2
FAST TRACK 2+2 LOGGED OFF
COMPLETED SUCCESSFULLY_
```

The final screen displays that the computer has logged onto the Fast Track 2+2 Drive-Thru Timer, is reading and loading the data, logged off and the download has completed successfully.

The download is now complete and the program will automatically take you back to the C:\FT2P2> DOS prompt. The ET, RT and AT files are now stored in the FT2P2 directory. **Note:** If a download is performed more than one time within the same hour, the most current download will overwrite the previous download reports. To view and/or print the files, refer to the next section **Viewing and Printing the Fast Track Download Reports from DOS.**

Viewing and Printing the Fast Track Download Reports from DOS

Identifying the Download Reports:

Each report will begin with a 2 letter prefix noting the report type (i.e ET, RT and AT), followed by the month, date and hour (in military time) that the download was performed. MMDDHH.

Example: ET010615 = Event Time report with download performed on **Jan. 6th** within the **3:00PM** hour(**15:00** military time).

Viewing and Printing Download Reports using the DOS Editor:

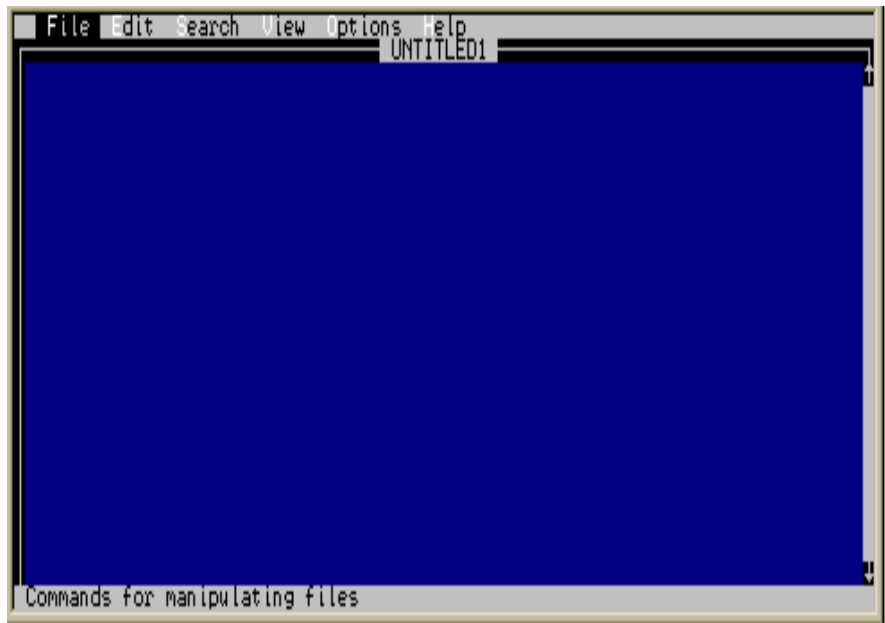
Go to the DOS root prompt C:\> and type **CD FT2P2**

Press **Enter**. You are now at the C:\FT2P2> directory.

Access the DOS Editor to view/print the download files.

To access the DOS Editor, at the C:\FT2P2> prompt, type **Edit** and press **Enter**.

This will take you into the **DOS Editor**.



Viewing and Printing Download Reports using the DOS Editor cont'd:

Go to **File** of the DOS Editor
and press **Enter**.

Arrow to **Open** and press
Enter.



Arrow to the the desired report
and press **Enter**.



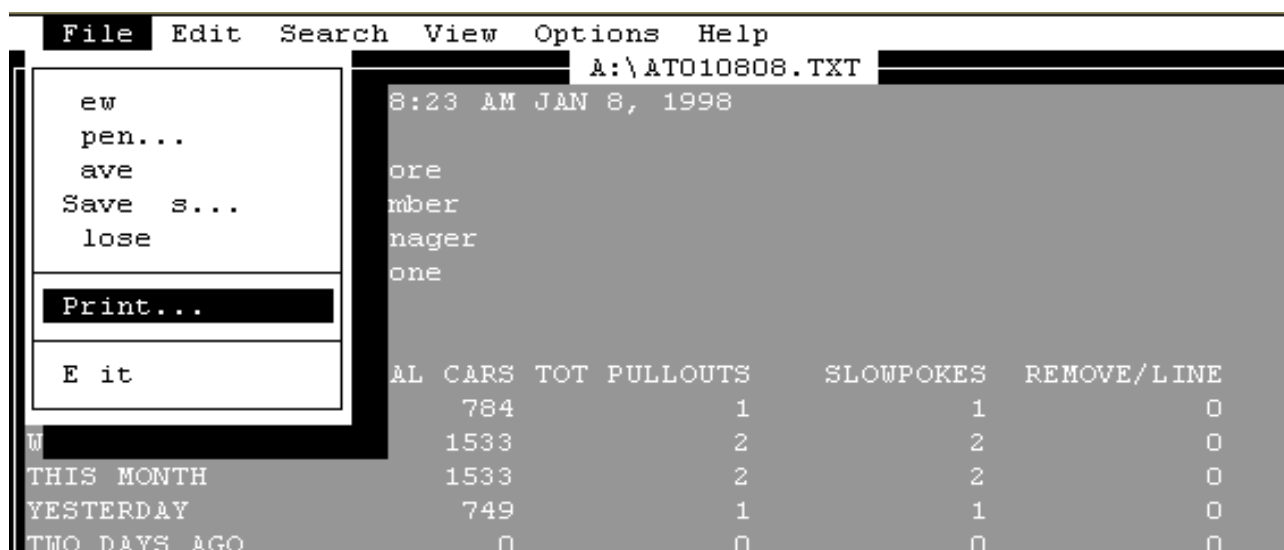
Viewing and Printing Download Reports using the DOS Editor cont'd:

The selected download report will now be displayed on the DOS Editor screen.

A SIDE		8:23 AM JAN 8, 1998				
		:Store				
		:Number				
		:Manager				
() -		:Phone				
	TOTAL CARS	TOT PULLOUTS	SLOWPOKES	REMOVE/LINE	MAX CARS	
TODAY (8:23AM)	784	1	1	0	0	
WEEK (FROM TUE)	1533	2	2	0	0	
THIS MONTH	1533	2	2	0	0	
YESTERDAY	749	1	1	0	0	
TWO DAYS AGO	0	0	0	0	0	
THREE DAYS AGO	0	0	0	0	0	
LAST WEEK	0	0	0	0	0	
TWO WEEKS AGO	0	0	0	0	0	
THREE WEEKS AGO	0	0	0	0	0	
LAST MONTH	0	0	0	0	0	
TWO MONTHS AGO	0	0	0	0	0	
TOTAL TIMES	GREET	MENU	WIN1	WIN2	LINE	

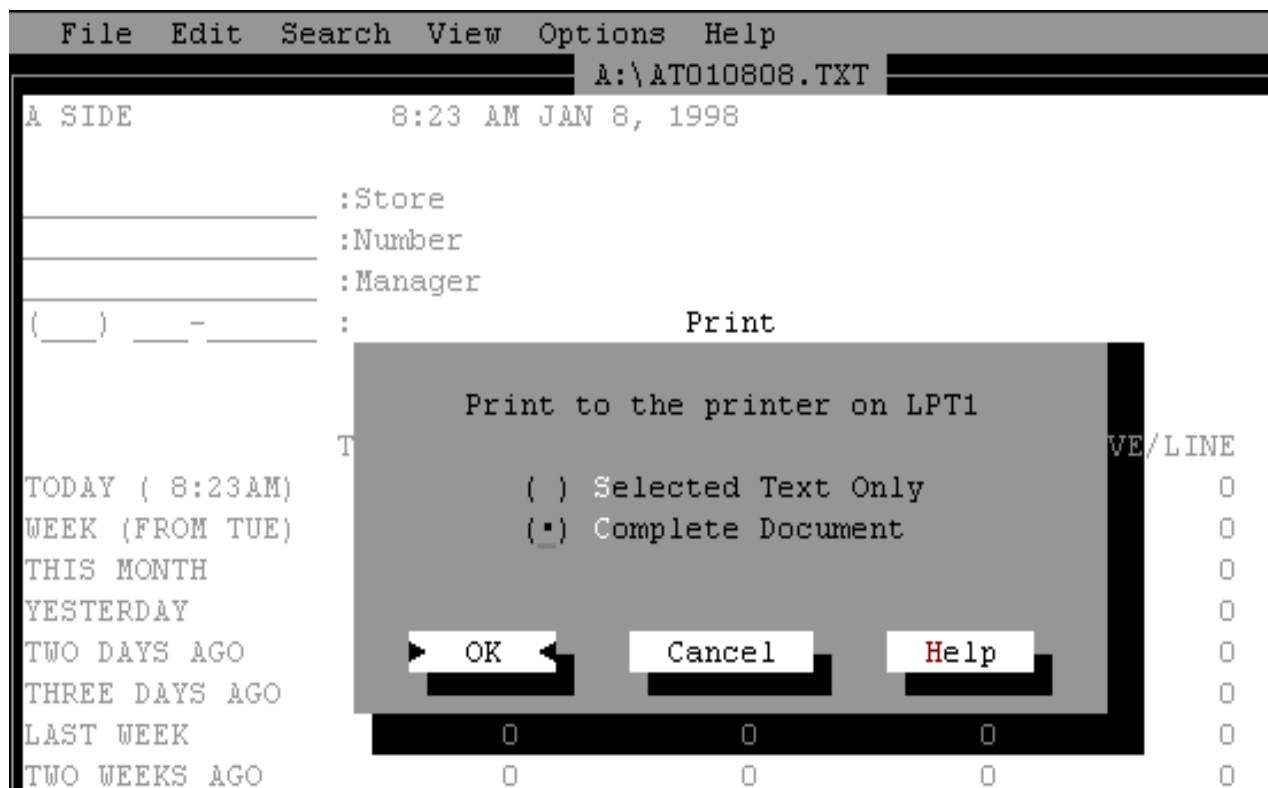
To **print** the report, go to **File** and press **Enter**.

Arrow to **Print** and press **Enter**.



Viewing and Printing Download Reports using the DOS Editor cont'd:

Using the **Tab** key, move to **OK** and press **Enter**.



The selected report will now print to your local printer.

Viewing and Editing the Config file for DOS

Editing the configuration file for Direct Downloading. The configuration file is needed to set your computing environment.

READ=FT2P2

PORT=1

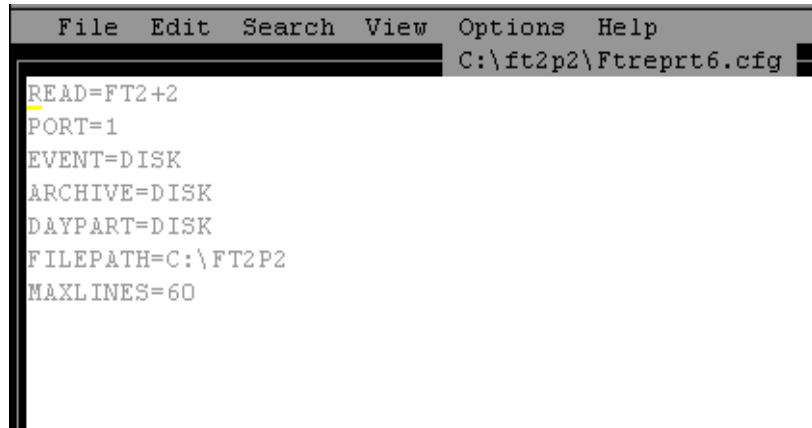
EVENT=DISK

ARCHIVE=DISK

DAYPART=DISK

FILEPATH=C:\FT2P2

MAXLINES=60



```
File Edit Search View Options Help
C:\ft2p2\Ftreprt6.cfg
READ=FT2+2
PORT=1
EVENT=DISK
ARCHIVE=DISK
DAYPART=DISK
FILEPATH=C:\FT2P2
MAXLINES=60
```

READ=FT2P2 Do not change this code it is needed to access the Fast Track 2+2 Drive-Thru Timer.

PORT=1 PORT this selects the com port your computer uses to access your Fast Track 2+2, choose 1 thru 4.

EVENT=DISK EVENT data is the data for each car as it occurs during the day. If you are not using the EVENT data it is a good idea to turn it off. It is a large file and will eventually take a lot of disk space. See Choices for settings.

ARCHIVE=DISK ARCHIVE data is historical data of up to two months. See Choices for settings.

DAYPART=DISK DAYPART data is the CUM and SHIFT data for the current day. See Choices for settings.

CHOICES:

DISK This writes your file to the directory you choose in **FILEPATH**.

PRINTER This sends the data to your printer if you have one connected to LPT1.

BOTH This sends the data to both disk and printer.

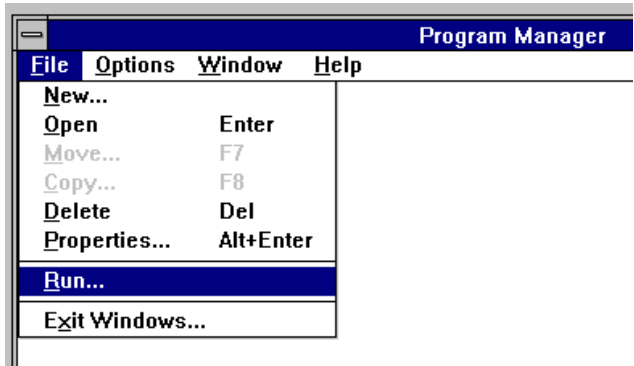
OFF This turns the procedure off.

FILEPATH=C:\FT2P2 **FILEPATH** determines the location you want to store the data you download.

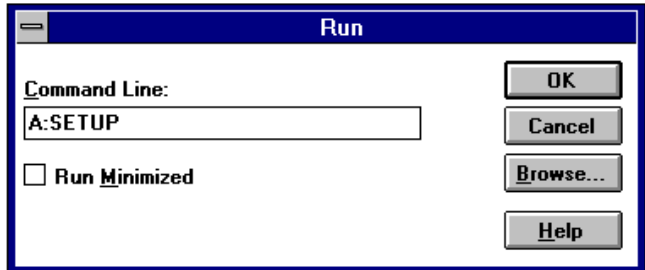
MAXLINES=60 **MAXLINES** determine the number of lines that will be printed on each page, if you have a printer attached to your computer.

Installing Fast Track Direct Download Software - Windows 3.1

Click on **File** of Program Manager and then click on **Run**.



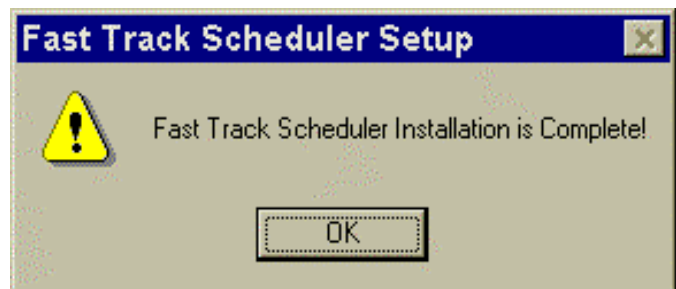
At the **Run** screen, type **A:Setup** and click on **OK**.



At the **Fast Track Scheduler Setup** screen, click on **Continue**.



In a few moments the computer will display this screen stating that the installation is now complete. At this screen click on **OK**.



Once installation is complete, the software has created a new directory in the C: Drive entitled **FT2P2**. This is the directory in which the Executable, Config, Readme and all download files will be stored. It is recommended that this directory be maintained.

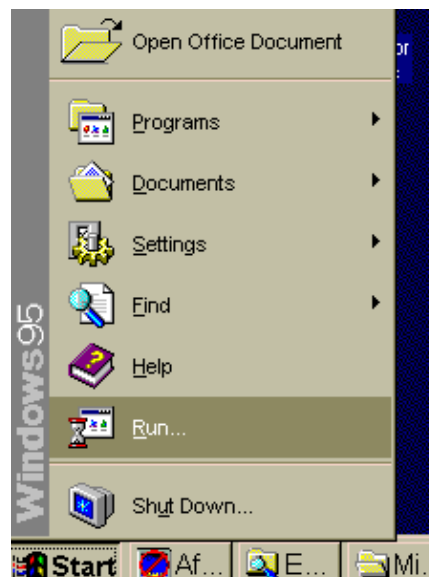
Installing software - Windows 3.1 cont'd:

The Fast Track Scheduler Setup screen will disappear & you will see this Fast Track Scheduler program group display on your screen. Please refer to the section “Running the Fast Track Download - Windows 3.1/95” on how to perform downloading.

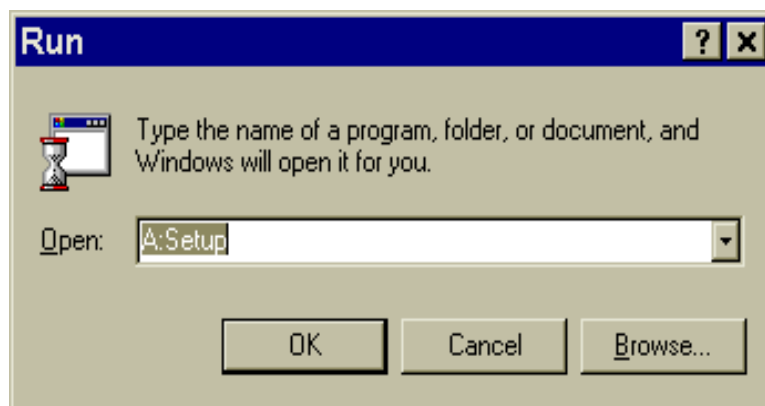


Installing Fast Track Direct Download Software -Windows 95

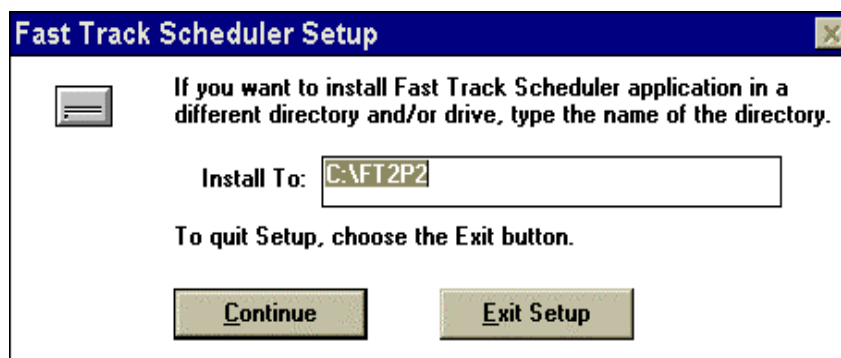
From the **Start** menu choose **Run**.



At the **Run** screen, type **A:Setup** and click **OK**.



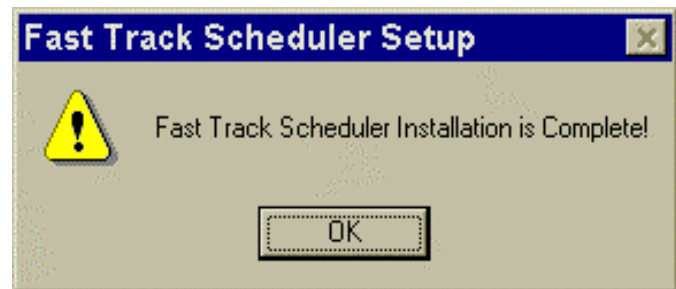
At the **Fast Track Scheduler Setup** screen, click on **Continue**.



Installing Software - Windows 95 cont'd:

In a few moments the computer will display this screen stating that the installation is now complete.

At this screen click on **OK**.



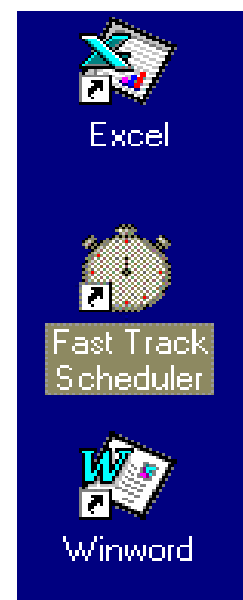
Once installation is complete, the software has created a new directory in the C: Drive entitled **FT2P2**. This is the directory in which the Executable, Config, Readme and all download files will be stored. It is recommended that this directory be maintained.

The Fast Track Scheduler Setup screen will disappear & you will see this Fast Track Scheduler screen display.

Click on the scheduler clock with your left mouse button, hold and drag out onto your desktop. Release the mouse button and then close the Fast Track Scheduler.



The Fast Track Scheduler time clock icon will now appear on your desktop. Please refer to the section "Running the Fast Track Download - Windows 95" on how to perform downloading.



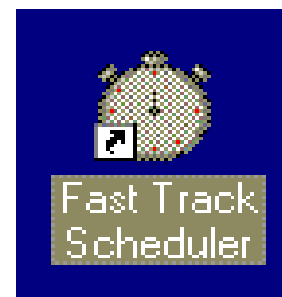
Running the Fast Track Download Program Windows 3.1/95

The download program is scheduled and executed in Microsoft Windows 3.1 and Windows 95 exactly the same way. **Note: If a download is performed more than once within the same hour, the most current download will overwrite the previous ET and AT reports.**

Double click on the **Fast Track Scheduler** icon to open the scheduler.



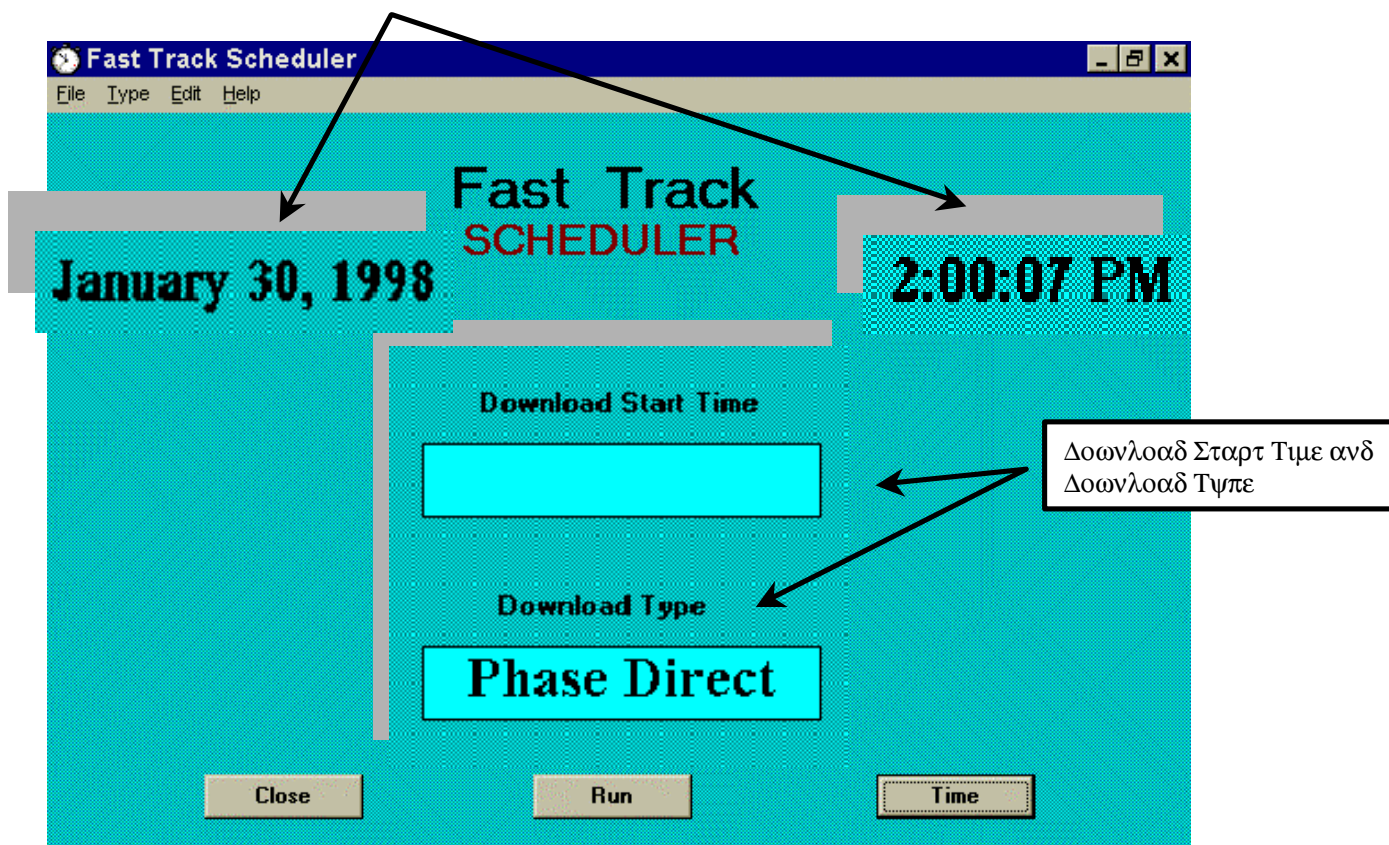
Windows 3.1



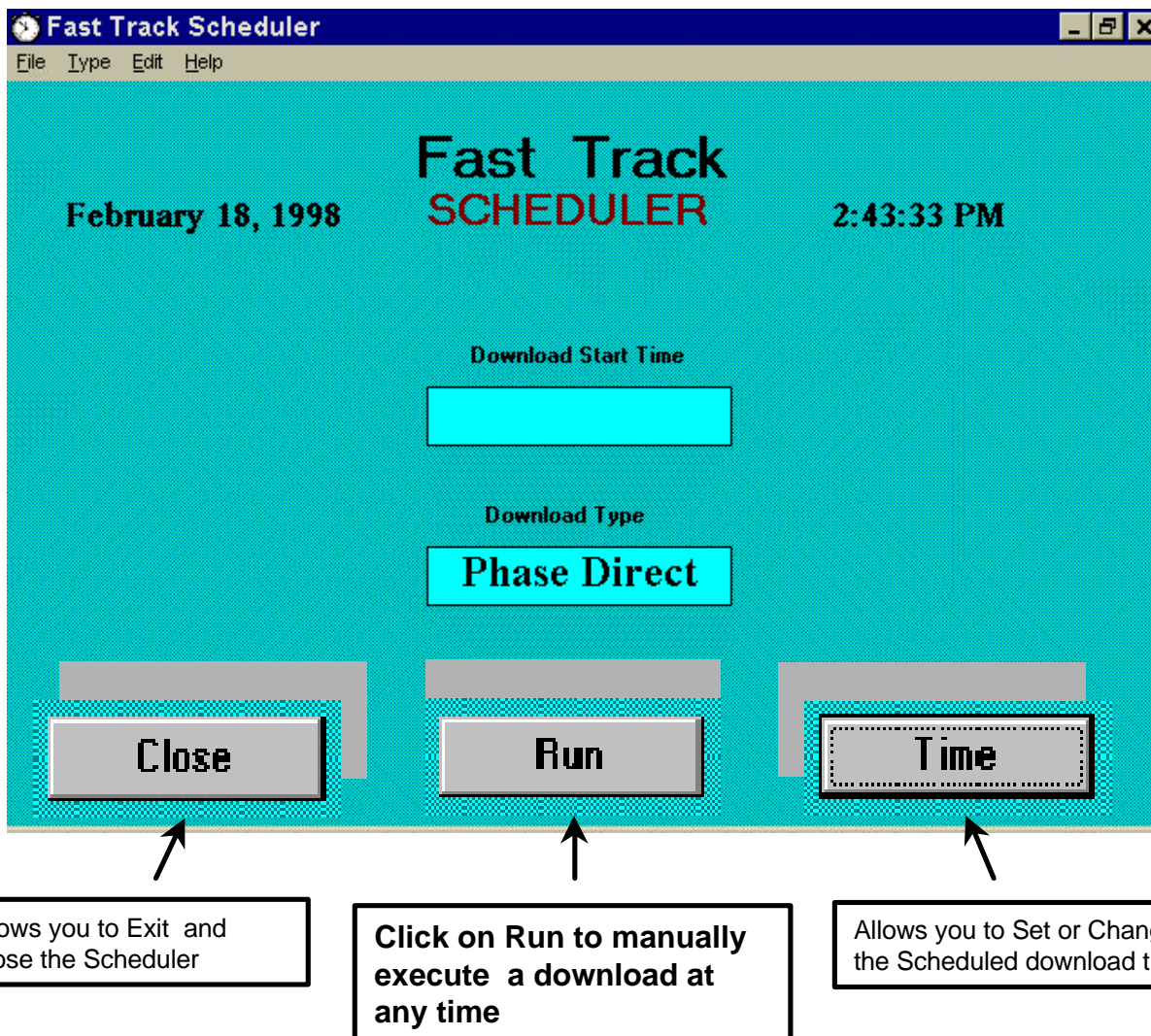
Windows 95

The Scheduler is now open and you should see the following screen.

Τη Σχηδουλευ Τιμε, Δαψ ανδ Δατε ις δετερμινεδ βψ τη
χυρρεντ Τιμε, Δαψ ανδ Δατε οφ τη χομπυτερ. Τη Σχηδουλευ
δισπλανς της τιμε ωιτη α ρυννινγ τιμε χλογκ σηοωινγ
σεχονδς.



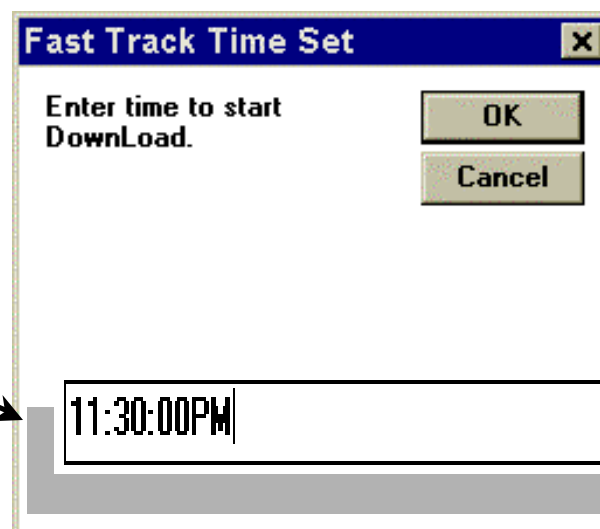
Running the Fast Track Download Program - Windows 3.1/95 cont'd:



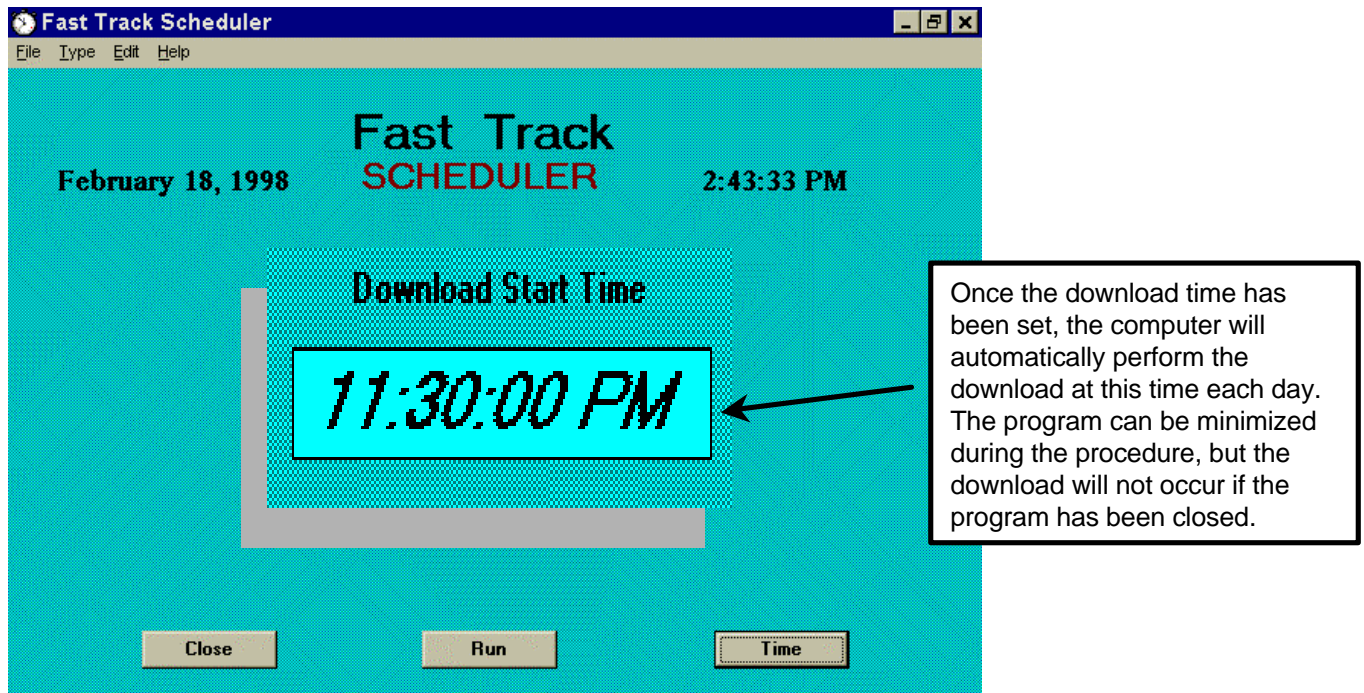
Setting the Scheduler for Automatic Direct Downloading

Click on the **Time** button of the Fast Track Scheduler display and it will take you into this screen.

Set time that you want download to occur each day and click OK. Be sure to include AM or PM as applied.



Setting the Scheduler for Automatic Direct Downloading cont'd:



Viewing and Printing Fast Track Download Reports - Windows 3.1/95

Identifying the Download Reports:

Each report will begin with a 2 letter prefix noting the report type (i.e ET, RT and AT), followed by the month, date and hour (in military time-MMDDHH) that the download was performed. **Example: ET010615 = Event Time** report with download performed on **Jan. 6th** within the **3:00PM** hour (**15:00** military time).

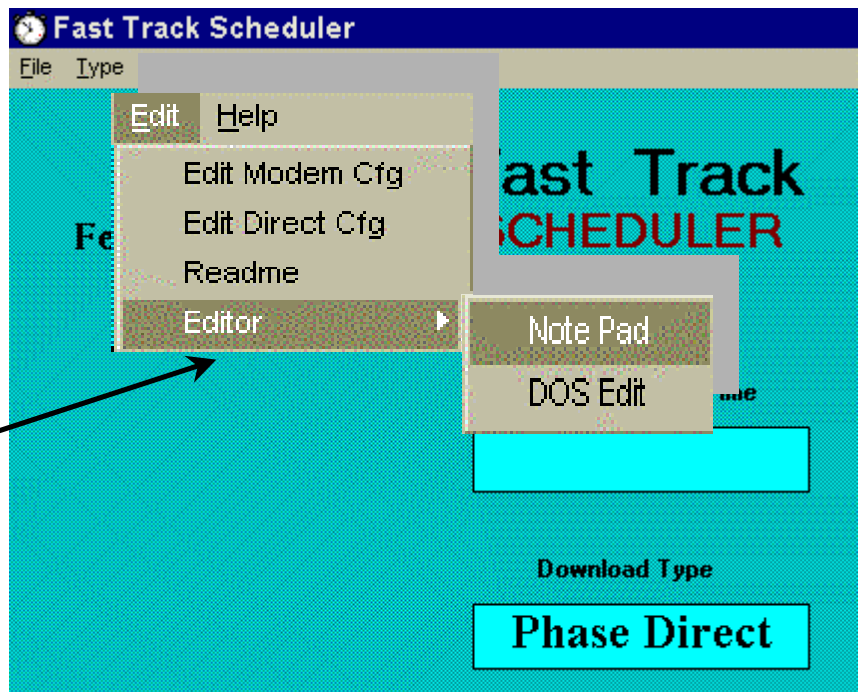
Viewing and Printing the Download Reports - Windows 3.1/95

The ET, RT and AT download reports are stored in the FT2P2 directory as text files. These reports are accessed by going to Edit of the Fast Track Scheduler and choosing either Notepad or DOS Edit. Notepad is a more advanced program than DOS Edit and works well for viewing and printing the Archive report (AT report) and/or the Daypart report (RT report). The Event report (ET report) however, may be too large to fit in Notepad. If the report does not fit in Notepad, Windows 95 will display a message box asking if you want to use Wordpad, click on YES and Wordpad will allow you to view all of the data.

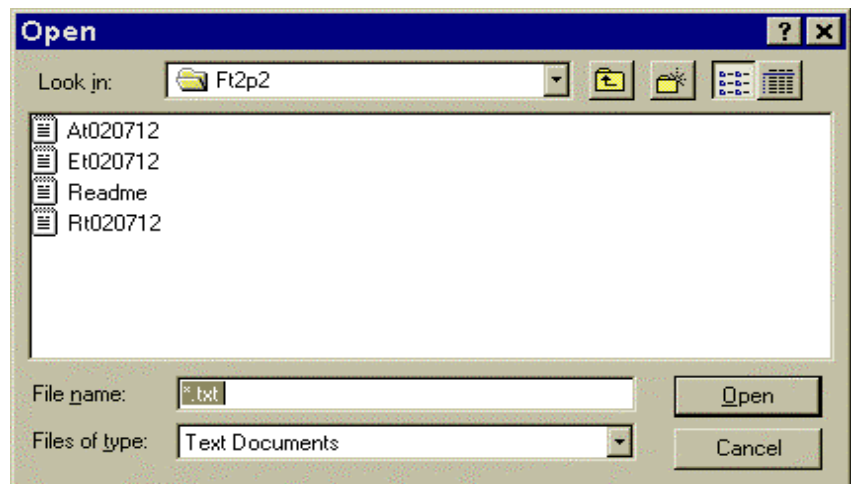
In Windows 3.1 you will need to choose DOS Edit from the Editor menu. For instructions on how to use DOS Edit, refer to "Viewing and Printing Fast Track Download Reports from DOS" on page 6.

Viewing and Printing the Download Reports - Windows 3.1/95 cont'd:

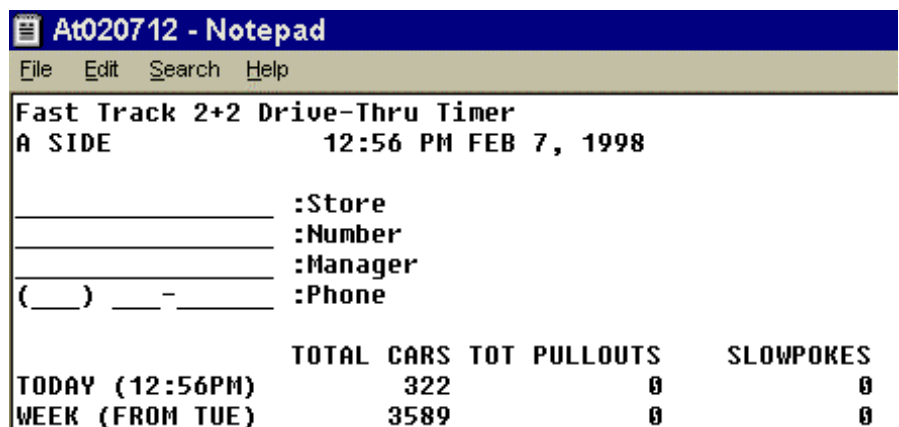
Open the Fast Track Scheduler and click on Edit. Place mouse pointer on either Note Pad or DOS Edit and click. This will open the selected program.



You will then see the Open screen with the contents of the FT2P2 directory displayed. Click on and highlight the report that you want to read or print, then click open.



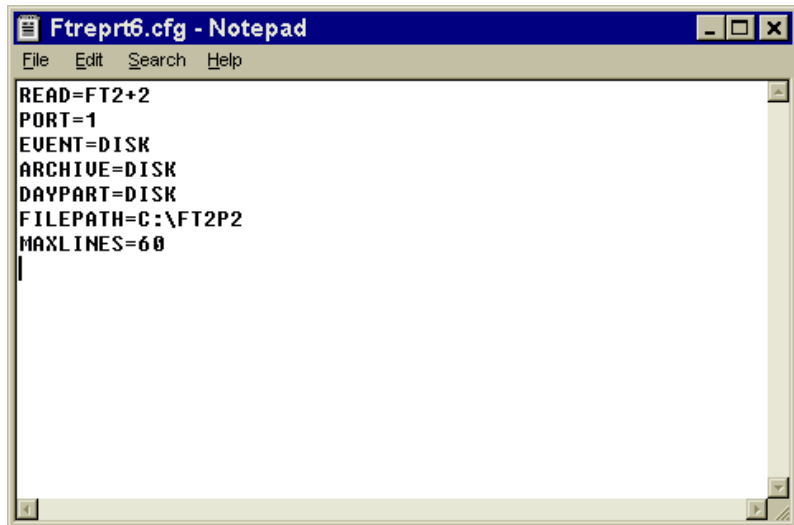
The selected report will then open for viewing and printing purposes.



Viewing and Editing the Config File - Windows 3.1/95

The FTREPT6 Config file can be opened and edited by clicking on Edit, then Edit Direct CFG in the Fast Track Scheduler screen. Please read this complete section before making any edits to the config file.

READ=FT2P2
PORT=1
EVENT=DISK
ARCHIVE=DISK
DAYPART=DISK
FILEPATH=C:\FT2P2
MAXLINES=60



READ=FT2P2 Do not change this code it is needed to access the Fast Track 2+2 Drive-Thru Timer.

PORT=1 PORT this selects the com port your computer uses to access your Fast Track 2+2 timer, choose 1 thru 4.

EVENT=DISK EVENT data is the data for each car as it occurs during the day. If you are not using the EVENT data, it is a good idea to turn it off. It is a large file and will eventually take a lot of disk space. See Choices for settings.

ARCHIVE=DISK ARCHIVE data is historical data of up to two months. See Choices for settings.

DAYPART=DISK DAYPART data is the CUM and SHIFT data for the current day. See Choices for settings.

CHOICES:

DISK This writes your file to the directory you choose in FILEPATH.

PRINTER This sends the data to your printer if you have one connected to LPT1.

BOTH This sends the data to both disk and printer.

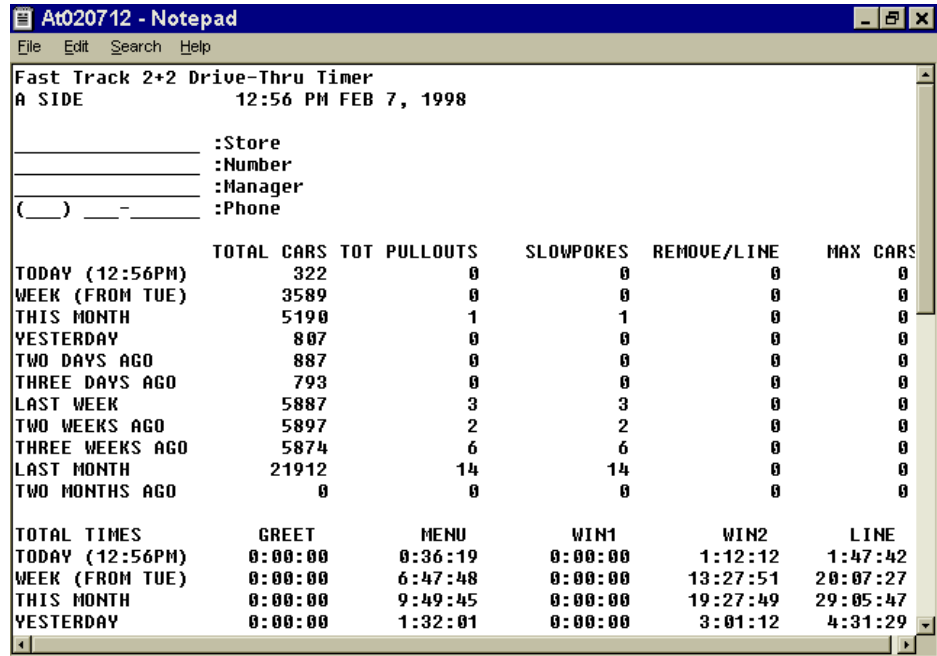
OFF This turns the procedure off.

FILEPATH=C:\FT2P2 This determines the location you want store the data you download.

MAXLINES=60 This determines the number of lines that will be printed on each page, if you have a printer attached to your computer.

Fast Track Download Report Types

The **AT report** represents archive data for the current day and as far back as 2 months ago.



At020712 - Notepad

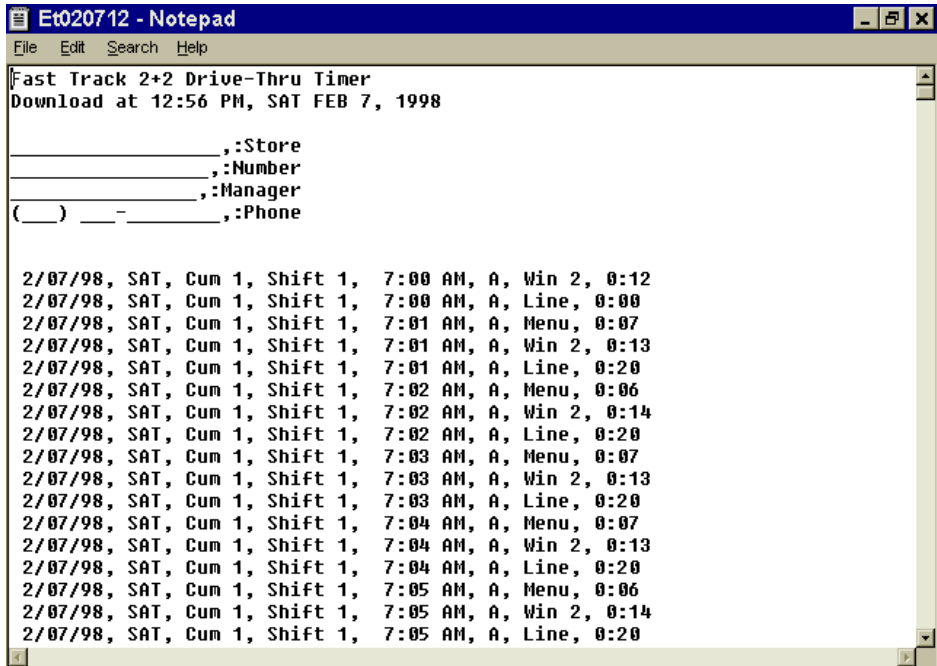
Fast Track 2+2 Drive-Thru Timer
A SIDE 12:56 PM FEB 7, 1998

_____:Store
_____:Number
_____:Manager
() ____ -:Phone

	TOTAL CARS	TOT PULLOUTS	SLOWPOKES	REMOVE/LINE	MAX CARS
TODAY (12:56PM)	322	0	0	0	0
WEEK (FROM TUE)	3589	0	0	0	0
THIS MONTH	5190	1	1	0	0
YESTERDAY	807	0	0	0	0
TWO DAYS AGO	887	0	0	0	0
THREE DAYS AGO	793	0	0	0	0
LAST WEEK	5887	3	3	0	0
TWO WEEKS AGO	5897	2	2	0	0
THREE WEEKS AGO	5874	6	6	0	0
LAST MONTH	21912	14	14	0	0
TWO MONTHS AGO	0	0	0	0	0

	GREET	MENU	WIN1	WIN2	LINE
TODAY (12:56PM)	0:00:00	0:36:19	0:00:00	1:12:12	1:47:42
WEEK (FROM TUE)	0:00:00	6:47:48	0:00:00	13:27:51	20:07:27
THIS MONTH	0:00:00	9:49:45	0:00:00	19:27:49	29:05:47
YESTERDAY	0:00:00	1:32:01	0:00:00	3:01:12	4:31:29

The **ET report** is Event data for each car as it has occurred for the current day. This information is great for importing to database and spreadsheet programs to create spreadsheets and graphs or maintain database information.



Et020712 - Notepad

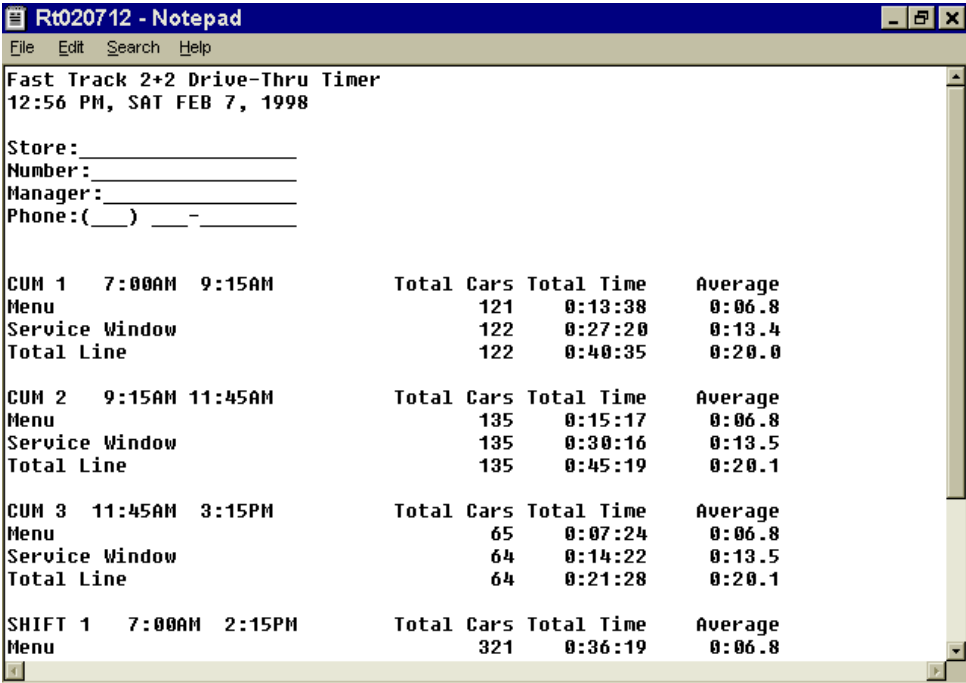
Fast Track 2+2 Drive-Thru Timer
Download at 12:56 PM, SAT FEB 7, 1998

_____,:Store
_____,:Number
_____,:Manager
() ____ -:Phone

2/07/98, SAT, Cum 1, Shift 1, 7:00 AM, A, Win 2, 0:12
2/07/98, SAT, Cum 1, Shift 1, 7:00 AM, A, Line, 0:00
2/07/98, SAT, Cum 1, Shift 1, 7:01 AM, A, Menu, 0:07
2/07/98, SAT, Cum 1, Shift 1, 7:01 AM, A, Win 2, 0:13
2/07/98, SAT, Cum 1, Shift 1, 7:01 AM, A, Line, 0:20
2/07/98, SAT, Cum 1, Shift 1, 7:02 AM, A, Menu, 0:06
2/07/98, SAT, Cum 1, Shift 1, 7:02 AM, A, Win 2, 0:14
2/07/98, SAT, Cum 1, Shift 1, 7:02 AM, A, Line, 0:20
2/07/98, SAT, Cum 1, Shift 1, 7:03 AM, A, Menu, 0:07
2/07/98, SAT, Cum 1, Shift 1, 7:03 AM, A, Win 2, 0:13
2/07/98, SAT, Cum 1, Shift 1, 7:03 AM, A, Line, 0:20
2/07/98, SAT, Cum 1, Shift 1, 7:04 AM, A, Menu, 0:07
2/07/98, SAT, Cum 1, Shift 1, 7:04 AM, A, Win 2, 0:13
2/07/98, SAT, Cum 1, Shift 1, 7:04 AM, A, Line, 0:20
2/07/98, SAT, Cum 1, Shift 1, 7:05 AM, A, Menu, 0:06
2/07/98, SAT, Cum 1, Shift 1, 7:05 AM, A, Win 2, 0:14
2/07/98, SAT, Cum 1, Shift 1, 7:05 AM, A, Line, 0:20

Fast Track Download Report Types cont'd:

The **RT report** records the Total Cars, Time and Averages for all set Cum and Shift periods for the current day along with the time frame of those periods.



Fast Track 2+2 Drive-Thru Timer
12:56 PM, SAT FEB 7, 1998

Store: _____
Number: _____
Manager: _____
Phone: (____) ____-____

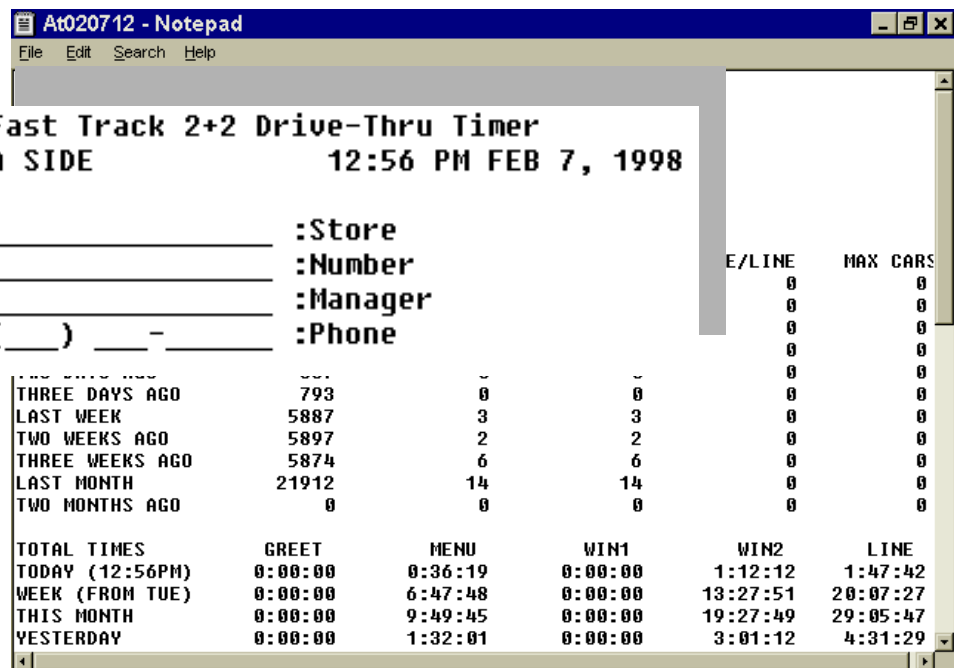
CUM 1	7:00AM	9:15AM	Total Cars	Total Time	Average
Menu			121	0:13:38	0:06.8
Service Window			122	0:27:20	0:13.4
Total Line			122	0:40:35	0:20.0

CUM 2	9:15AM	11:45AM	Total Cars	Total Time	Average
Menu			135	0:15:17	0:06.8
Service Window			135	0:30:16	0:13.5
Total Line			135	0:45:19	0:20.1

CUM 3	11:45AM	3:15PM	Total Cars	Total Time	Average
Menu			65	0:07:24	0:06.8
Service Window			64	0:14:22	0:13.5
Total Line			64	0:21:28	0:20.1

SHIFT 1	7:00AM	2:15PM	Total Cars	Total Time	Average
Menu			321	0:36:19	0:06.8

Report Heading Description and Programming Directions



Fast Track 2+2 Drive-Thru Timer
A SIDE 12:56 PM FEB 7, 1998

_____:Store
_____:Number
_____:Manager
(____) ____-____:Phone

				E/LINE	MAX CARS
THREE DAYS AGO	793	0	0	0	0
LAST WEEK	5887	3	3	0	0
TWO WEEKS AGO	5897	2	2	0	0
THREE WEEKS AGO	5874	6	6	0	0
LAST MONTH	21912	14	14	0	0
TWO MONTHS AGO	0	0	0	0	0

TOTAL TIMES	GREET	MENU	WIN1	WIN2	LINE
TODAY (12:56PM)	0:00:00	0:36:19	0:00:00	1:12:12	1:47:42
WEEK (FROM TUE)	0:00:00	6:47:48	0:00:00	13:27:51	20:07:27
THIS MONTH	0:00:00	9:49:45	0:00:00	19:27:49	29:05:47
YESTERDAY	0:00:00	1:32:01	0:00:00	3:01:12	4:31:29

This is your store information which is displayed at the top of each download report. This is programmed under **HEADING** in the Fast Track 2+2 Main Console Set Parameters. Refer to the Fast Track 2+2 Operations Manual for programming instructions.